



Moore House, 2 Gatliff Road
London SW1W

GARTON JONES.COM



Moore House, 2 Gatliff Road London, SW1W

£725 Per Week

GARTON JONES.COM

8 Gatliff Road
Grosvenor
Waterside
Chelsea
London
SW1W 8DP

Sales +44 (0) 20 7730 5007
gws@gartonjones.com
www.gartonjones.com

A ONE DOUBLE BEDROOM apartment to rent of approx. 546 sq.m (50.7 sq.m) in Moore House, Grosvenor Waterside development. This FURNISHED property benefits from an open plan reception room, kitchen with integrated appliances, bedroom with fitted wardrobes, underfloor heating, and modern bathroom suite. 24 HOUR CONCIERGE, GYM and SPA. On-site Sainsbury's Local, coffee shop and private kids club. SLOANE SQUARE and VICTORIA station with Gatwick Express are within walking distance. Battersea Park is also just a short stroll away across Chelsea Bridge.

Available via Garton Jones' on-site office at Grosvenor Waterside (underneath Bramah House).

Please note furniture may differ to that shown in the current photos.

Council Tax: Westminster City Council (band E)

EPC Rating: B (82)

12 month minimum term. 5 week deposit required.

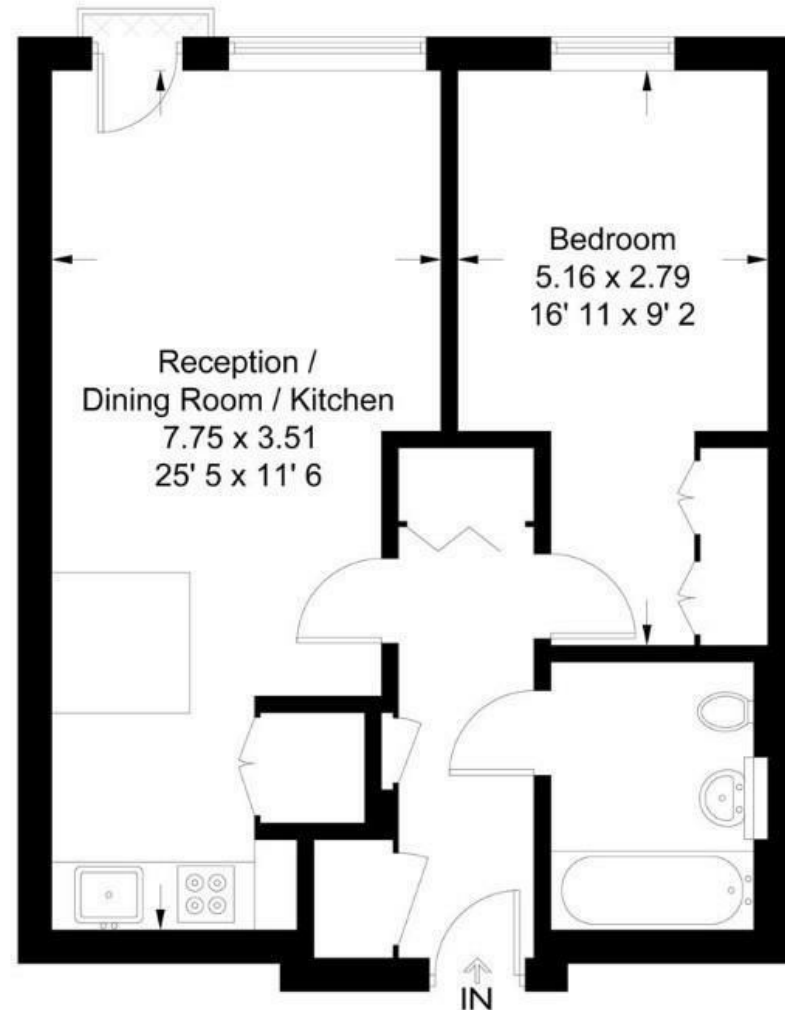
EPC certificate available on request.

- 546 Sq.ft (50.7 Sq.m)
- 1 Double Bedroom
- Luxury Bathroom Suite
- Open Plan Reception Room
- Kitchen with Integrated Appliances
- 24 Hour Concierge
- Under Floor Heating
- Residents' Gym, Jacuzzi & Spa Facilities
- On-Site Sainsbury's, Coffee Shop, Crèche & Purple Dragon Private Kids Club
- Walking Distance to Sloane Square & Victoria Station



Moore House

Approximate Gross Internal Area = 546 sq ft / 50.7 sq m



Not to scale, for guidance only and must not be relied upon as a statement of fact
All measurements and areas are approximate only and have been prepared in
accordance with the current edition of the RICS Code of Measuring Practice

